



In Search of Better Health

KEMRI

Graduate School

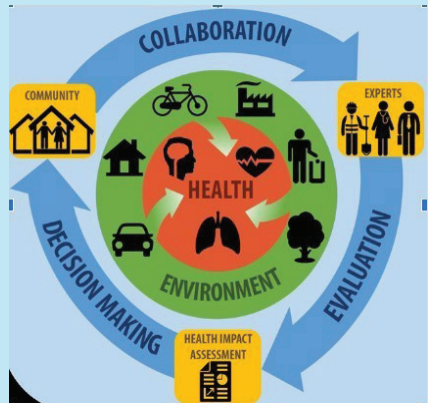
HEALTH IMPACT ASSESSMENT (HIA) COURSE

COURSE DESCRIPTION

Learn how to evaluate health effects of policies, projects, and programmes. This course will equip you with the skills and the knowledge needed to make informed decisions for healthier communities.

KEY TOPICS COVERED

- Introduction to Health Impact Assessment
- Data collection and Analysis Techniques
- Stake holder Engagement and Collaboration
- Identifying Vulnerable Populations
- Developing Effective Mitigation Strategies
- Real World HIA Case Studies



TARGET GROUP

Public and Environmental Health Professionals, Urban Planners and City Officials, Health Economists, Policymakers, Researchers and Academics, Housing/Zoning Professionals, Environmental Scientists, Industrial Hygienists, Municipal, Finance Professionals, Municipal Engineers, Site Remediation Professionals

START DATE: 9th June, 2025

COURSE COST
KSH.120,000

COURSE DURATION
6 WEEKS

Phase A: 2 weeks - Classwork
Phase B: 4 Weeks - HIA project Report

PAYMENT DETAILS
Bank: Kenya Commercial Bank
Account Number: 1104167611
Account Name: ITROMID
Branch: KIPANDE

Certificate to be Issued
CPD points to awarded by professional body

Contact Us:
Mobile: 0713112853/4
graduateschool@kemri.go.ke

www.kemri.go.ke